



CLOUD9

FABRICS

FREE PROJECT SHEET **THE COURTYARD QUILT**

SIZE 46" x 55"



DESIGN **MICHELLE ENGEL BENCSKO**

TECHNICAL EDITOR **LINDA SPIRIDON**

CREDITS & INFO

THE COURTYARD QUILT

SIZE: 46" x 55"

DESIGNER: Michelle Engel Benckso

TECHNICAL EDITOR: Linda Spiridon

Note: All possible care has been taken to assure the accuracy of this pattern. We are not responsible for printing errors or the manner in which individual work varies. Please read instructions carefully before starting the construction of this quilt. If desired, wash and iron your fabrics before starting to cut.

WHITEHAVEN

DESIGNER: Feena Brooks

SUBSTRATE: Quilter's Cotton

DELIVERY DATE: May 2018

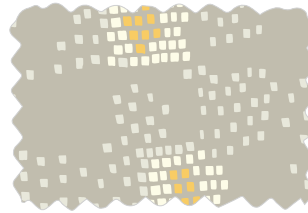
MATERIALS NEEDED



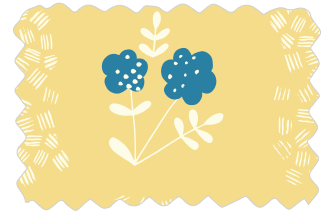
FABRIC A | 900
limestone
1¼ yards



FABRIC B 202302
aynho weir gray
1 fat quarter



FABRIC C 202201
st bees gray
1 fat quarter



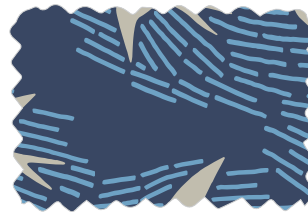
FABRIC D 202401
new lane gold
1 fat quarter



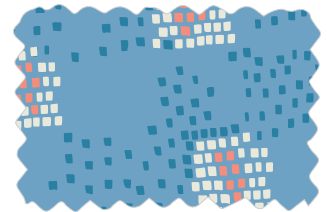
FABRIC E 202301
aynho weir ivory
1 fat quarter



FABRIC F 202501
metcombe navy
1 fat quarter



FABRIC G 202102
whitehaven navy
1 fat quarter



FABRIC H 202202
st bees blue
1 fat quarter



FABRIC I 202502
metcombe pink
1 fat quarter



FABRIC J 202402
new lane coral
1 fat quarter



FABRIC K 202101
whitehaven ivory
1 fat quarter



BINDING 202502
metcombe navy
½ yard



BACKING 202302
aynho weir gray
3½ yards

CUTTING DIRECTIONS

Cutting dimensions include 1/4" seam allowances.



FABRIC A

54- 1½" x 8 ½" strips
5- 1½" x 44 ½" strips
2- 1½" x 46 ½" strips
2- 1½" x 53 ½" strips



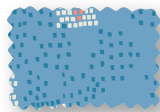
FABRIC G

6- 4" x 8 ½" rectangles



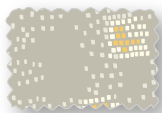
FABRIC B

6- 4" x 8 ½" rectangles



FABRIC H

4- 4" x 8 ½" rectangles



FABRIC C

6- 4" x 8 ½" rectangles



FABRIC I

6- 4" x 8 ½" rectangles



FABRIC D

6- 4" x 8 ½" rectangles



FABRIC J

4- 4" x 8 ½" rectangles



FABRIC E

6- 4" x 8 ½" rectangles



FABRIC K

8- 4" x 8 ½" rectangles



FABRIC F

8- 4" x 8 ½" rectangles
6- 2.5" strips
(for Binding)

ASSEMBLY DIRECTIONS

1. Sew a 1½" x 8½" sashing strip between 2 matching rectangles. [fig 1]
2. Repeat step 1 with all matching rectangles for a total of 30 blocks.
3. Arrange 5 blocks to make a horizontal row, alternating the direction of the block. Sew a 1½" x 8½" sashing strip between each block to complete the row. [fig 2] Make 6 rows. Follow **QUILT DIAGRAM** for placement.

ASSEMBLING THE QUILT

4. Sew 1½" x 44½" sashing strip between horizontal rows to connect all rows and complete the quilt top. [fig 3] Refer to **QUILT DIAGRAM**.
5. Add 1½" x 53½" sashing strips to sides of quilt top. Sew a 1½" x 46½" sashing strip to top and to bottom. Refer to **QUILT DIAGRAM**.
6. Layer the backing, batting and quilt top. Baste, quilt and bind.

fig 1

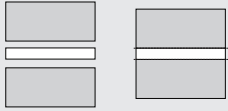


fig 2

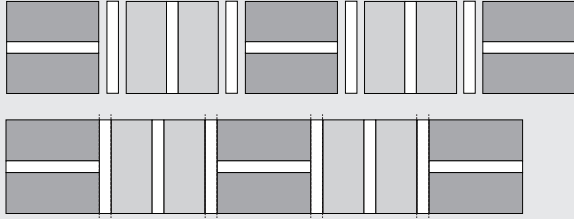


fig 3

