



CLOUD9

PROJECT

WEDGWOOD TREE SKIRT

SIZE 46" ROUND



DESIGN MICHELLE ENGEL BENCSKO

TECHNICAL EDITOR LINDA SPIRIDON

TERMS AND CONDITIONS: *This pattern is protected by copyright law, for personal use only, and is not intended for resale or distribution. Selling finished products using this pattern is prohibited. If you are interested in using this pattern for classes or guild workshops, each member or participant must purchase their own pattern. For any other inquiries, please contact us at marketplace@cloud9fabrics.com.*

MATERIALS

WEDGWOOD TREE SKIRT FEATURING CIRRUS SOLIDS AND WE ARE ALL STARS

$\frac{1}{3}$ yard each: We Are All Stars [Blaze & Mist], Cirrus Solids [Lava, Mint, & Shamrock]

$\frac{1}{8}$ yard: Cirrus Solids [Peat]

$1\frac{1}{4}$ yards: Cirrus Solids [Limestone]

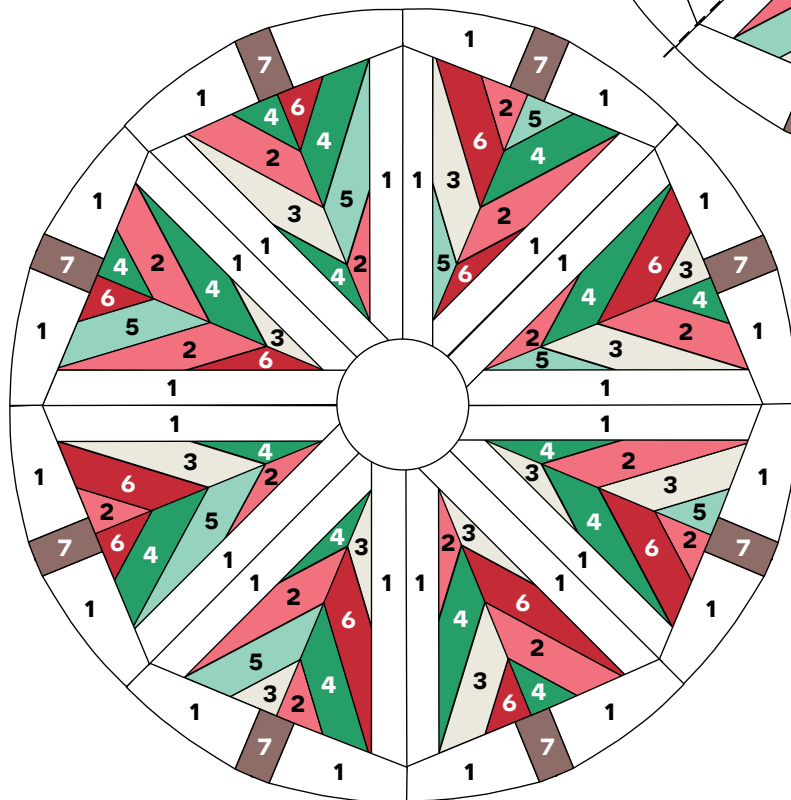
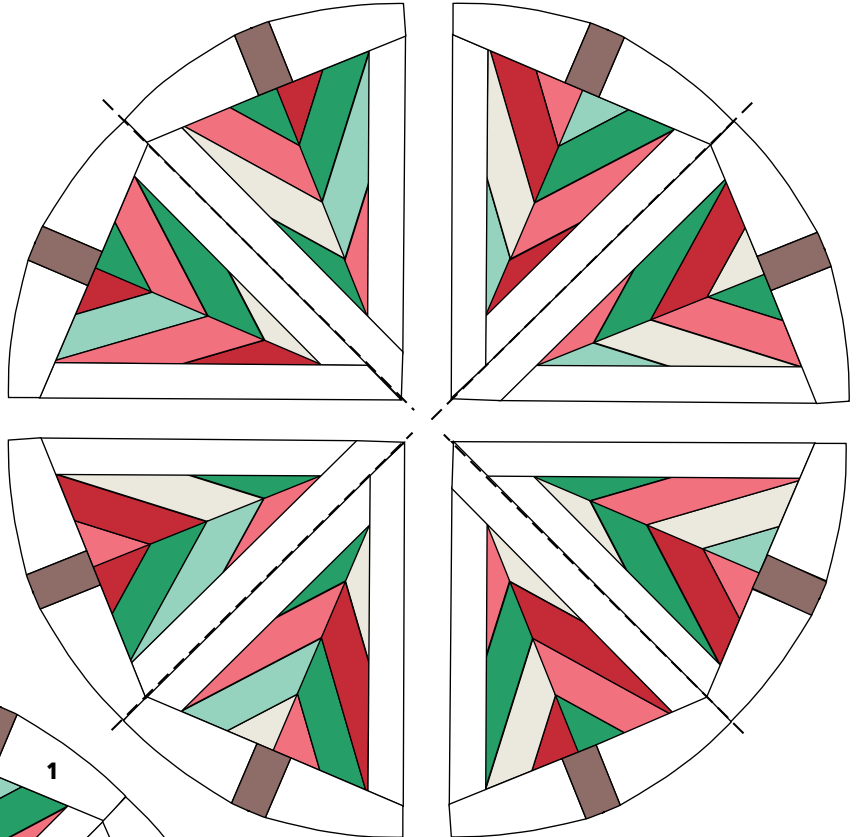
$\frac{3}{4}$ yard cut on the bias: We Are All Stars [Blaze] 3 yards: Cirrus Solids [Limestone] for Backing

Note: All possible care has been taken to assure the accuracy of this pattern. We are not responsible for printing errors or the manner in which individual work varies. Please read instructions carefully before starting the construction of this Intermediate project.

If desired, wash and iron your fabrics before starting to cut.

QUILT DIAGRAM

- 1:** Limestone
- 2:** Blaze
- 3:** Mist
- 4:** Shamrock
- 5:** Mint
- 6:** Lava
- 7:** Peat



CUTTING DIRECTIONS

Cutting dimensions include ¼" seam allowances.

The trees are pieced in sections using the templates provided. *You will cut 8 mirrored pieces for each template A-D, (a left and right side for each tree).* KEEP fabric folded wrong sides together when cutting out templates. It is helpful to press and spray starch fabric before starting. (You will be piecing with bias edges.) Accurately cut templates and sew ¼" seams. Follow arrow on template to cut on straight of grain. Use double sided tape to the underside of the template and tape to fabric to keep it from moving. Align a ruler to the edge of template and carefully cut, moving ruler as needed. You may also use a fine marker and draw around templates and cut out.

from Blaze cut:

- Template **A**: 2 sets (2 left & 2 right)
- Template **B**: 2 sets
- Template **C**: 2 sets
- Template **D**: 2 sets

from Mist:

- Template **A**: 2 sets (2 left & 2 right)
- Template **B**: 2 sets
- Template **C**: 1 set (1 left & 1 right)
- Template **D**: 1 set

from Shamrock:

- Template **A**: 2 sets
- Template **B**: 2 sets
- Template **C**: 2 sets
- Template **D**: 2 sets

from Lava:

- Template **A**: 1 set
- Template **B**: 1 set
- Template **C**: 2 sets
- Template **D**: 2 sets

from Mint:

- Template **A**: 1 set
- Template **B**: 1 set
- Template **C**: 1 set
- Template **D**: 1 set

from Peat:

- Template **E**: 8 total tree trunks

from Limestone:

- 8- 2 ½" x WOF strips
- Template **F**: 8 sets (8 left & 8 right)

ASSEMBLY DIRECTIONS

BLOCK ASSEMBLY

1. Layout tree pieces cut from templates to make 8 trees. You can follow the quilt diagram for color placement or random mix the fabrics to your liking.
2. Sew LEFT side pieces of tree, begin with **A** and sew to **B** aligning edges. Sew ¼" seams. Add the **C** piece to **B** and then attach **D** to **C**. Press one direction when tree half side is completed, careful not to stretch fabric. *[fig 1a]* Sew RIGHT side of tree in the same sequence and press seams opposite direction of left half of tree. *[fig 1b]*
3. Sew left and right sides of tree together. Opposing seams should lock in place and meet nicely. *[fig 2]* Make 8 trees.
4. Add the Limestone sashing to the sides using the 2½" strips. One strip is enough for both sides of one tree. Leave approximately 1¾" tail at bottom of tree, sew RST, on the right edge of the tree, from the bottom end of tree toward the top. *[fig 3a]* Press toward sashing. Lay a long ruler on left edge of the tree and extended over the right side sashing. Keep a 45 degree angle, trim top edge of strip at an angle. Strip should be aligned and extended even with left side edge of the tree. Trim bottom strip even with tree bottom. *[fig 3b]*

ASSEMBLY DIRECTIONS

5. Using the angled end of the strip remaining from Step 4, place angled end at the bottom left side of tree RST and begin sewing from bottom of the tree to the top as in Step 4. Make sure top end of strip will extend beyond the tree top so that when pressed open it will align beyond the angle of the right side sashing. Press toward sashing. Trim bottom edge and tree top edge as in step 4. *[fig 4] (Important to have each tree top point equal 45 degrees so that the tree skirt will lay flat when all 8 tree sections are pieced.)*
6. Sew left and right sides of template **F** to each side of the tree trunk, template **E**. Note the slight curve to both templates are the bottom edge of the tree skirt and the ends angle outward. Make 8. *[fig 5]*
7. Sew tree base to the bottom of each tree. *[fig 6]*
8. Layout the tree skirt units in a circle. Sew the units together in pairs.
9. Join the pairs to complete the tree skirt top.
10. Draw a 5" diameter circle, template **G**, in the center of the tree skirt top. Sew a stay stitch $\frac{1}{4}$ " between the marked circle and the tree skirt.
11. Layer tree skirt, batting, and backing. Quilt as desired.
12. Trim the excess batting and backing even with the outside edge of the tree skirt top.
13. Stay stitch $\frac{1}{8}$ " on both sides of one of the seam lines between two of the wedge-shape units. Cut on the seam line to create a slit in the tree skirt and cut on the line around the marked center circle.

BINDING:

14. Make approximately 260" of bias binding. Attach binding to the tree skirt's outside and split edges. Fold binding to the back of tree skirt and slip stitch folded edge.
15. Attach binding to center circle leaving a 15" long tail at the beginning and end for tying a bow. Slip stitch binding edge to back side of tree skirt. Fold raw edges of ties under and straight stitch by machine.

DIAGRAMS

fig 1a

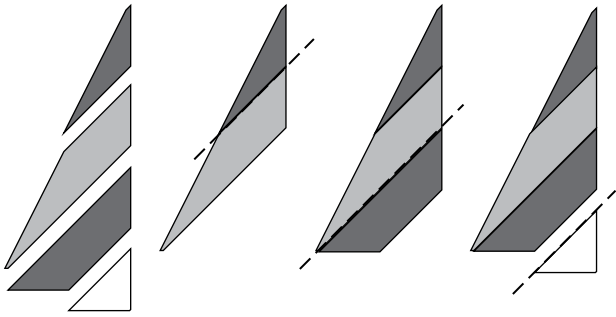


fig 1b

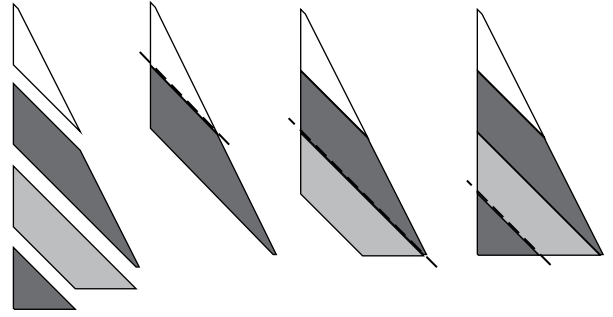


fig 2

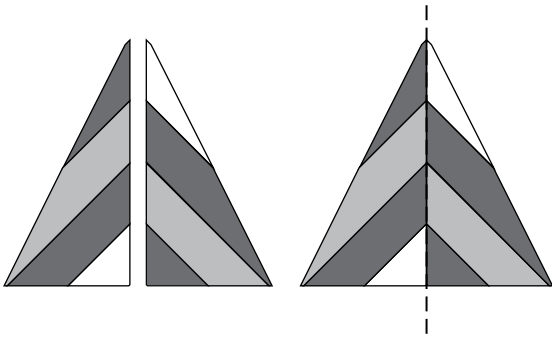


fig 3a

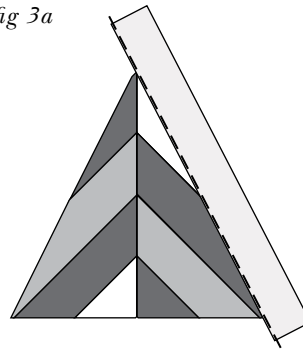


fig 3b

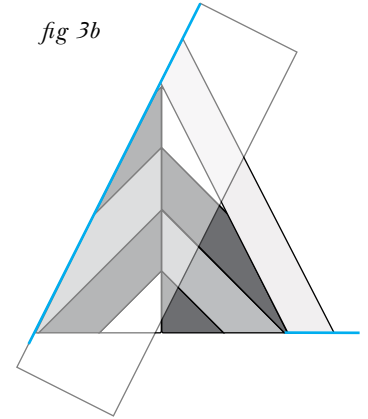


fig 4

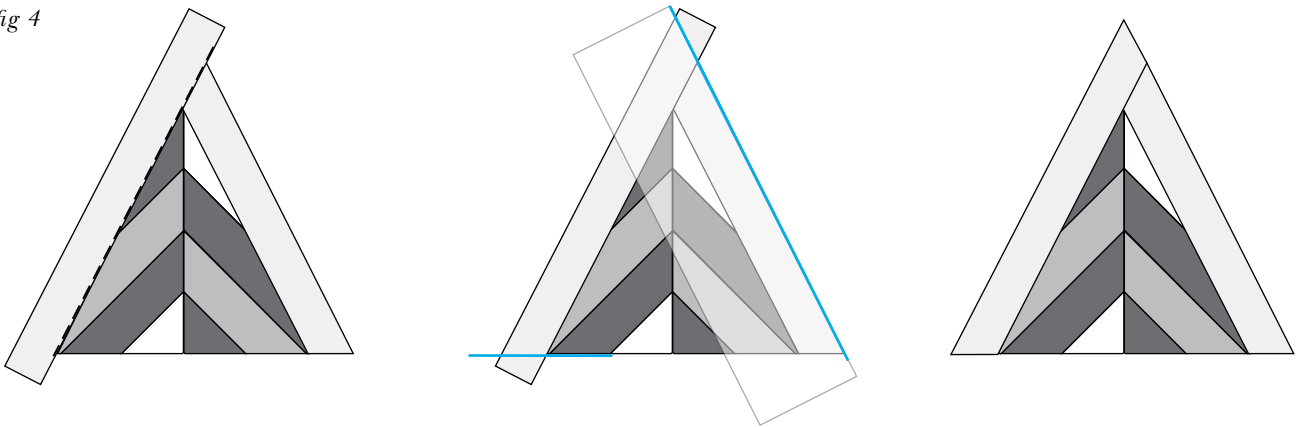


fig 5

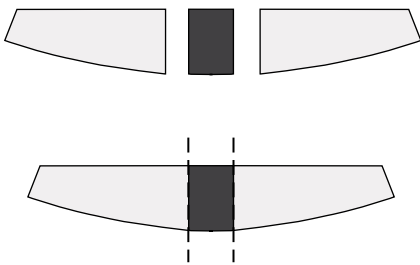
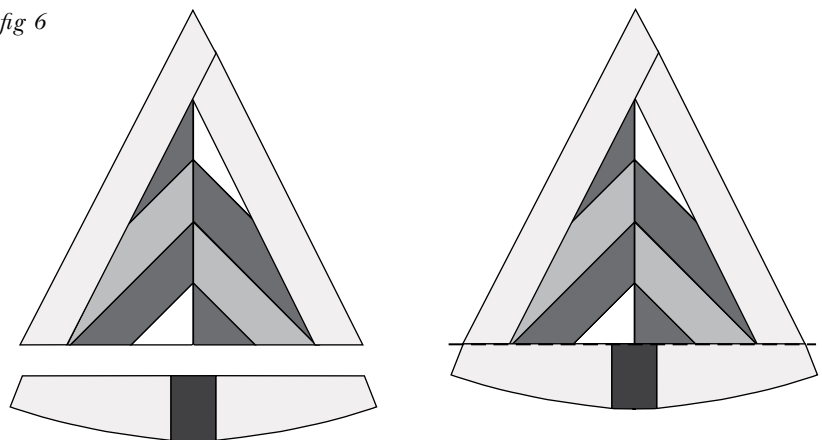
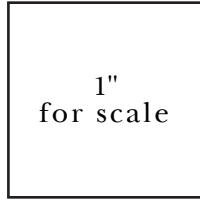


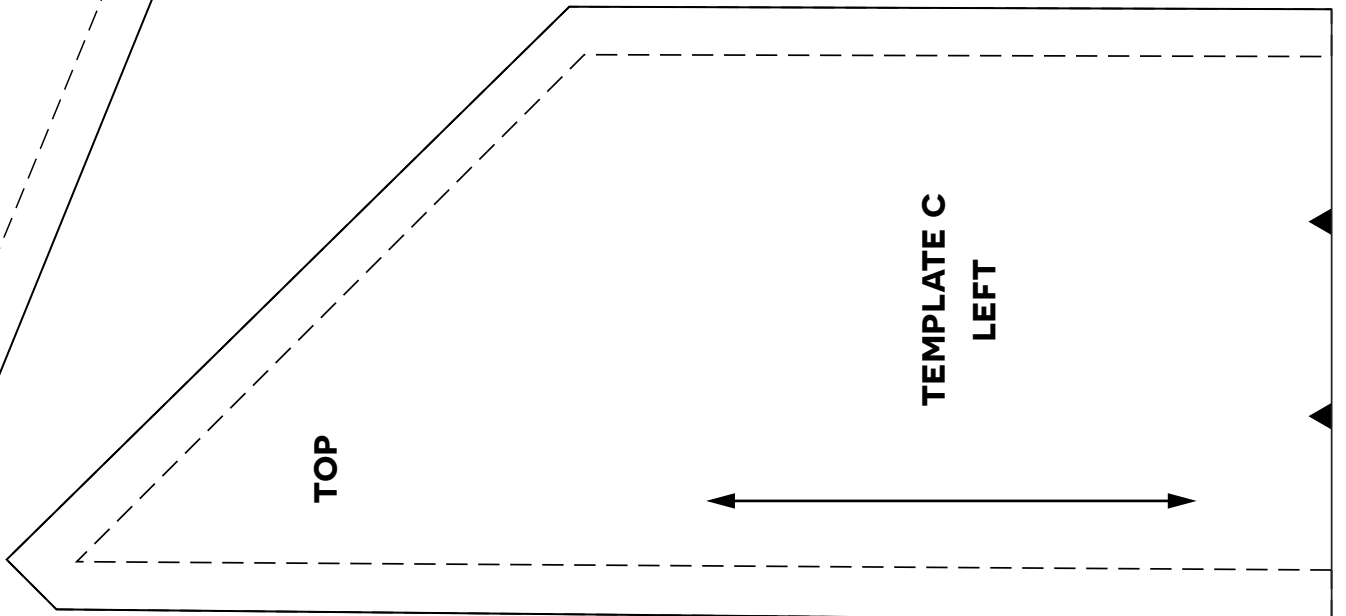
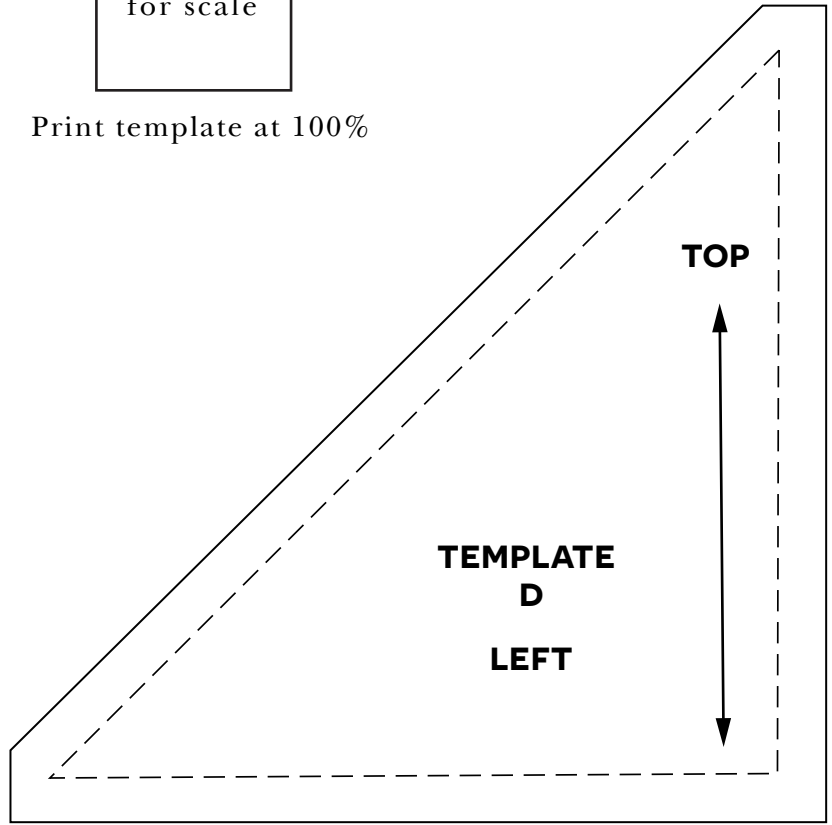
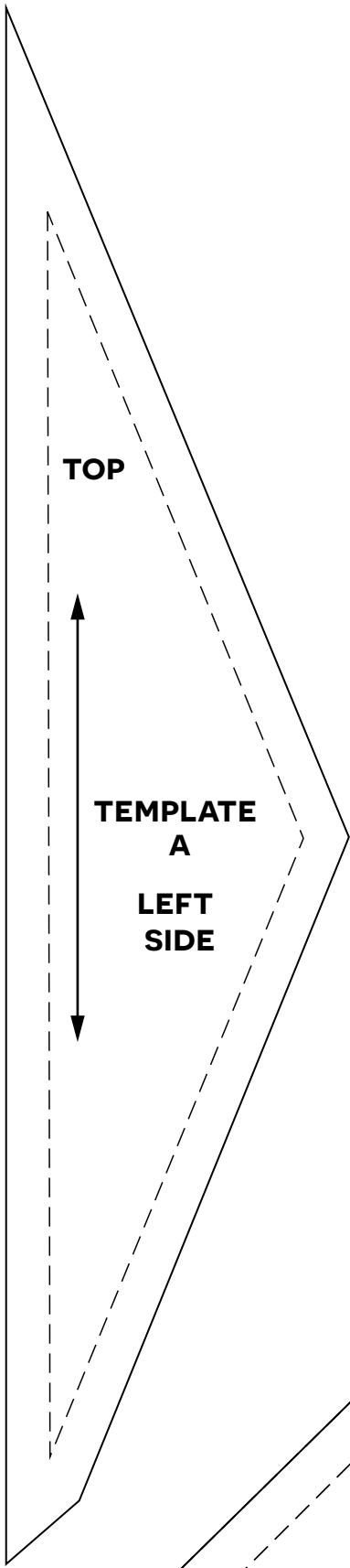
fig 6



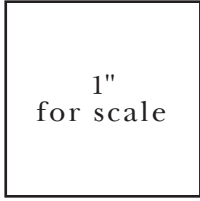
TEMPLATES



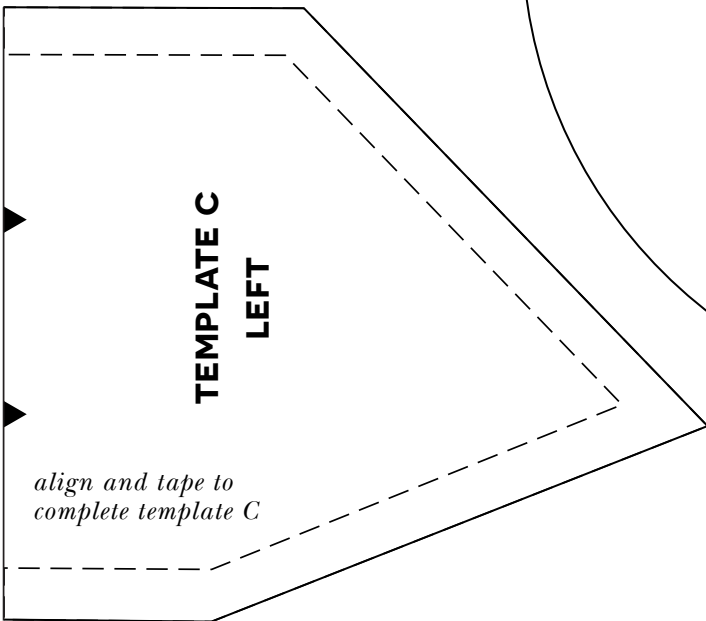
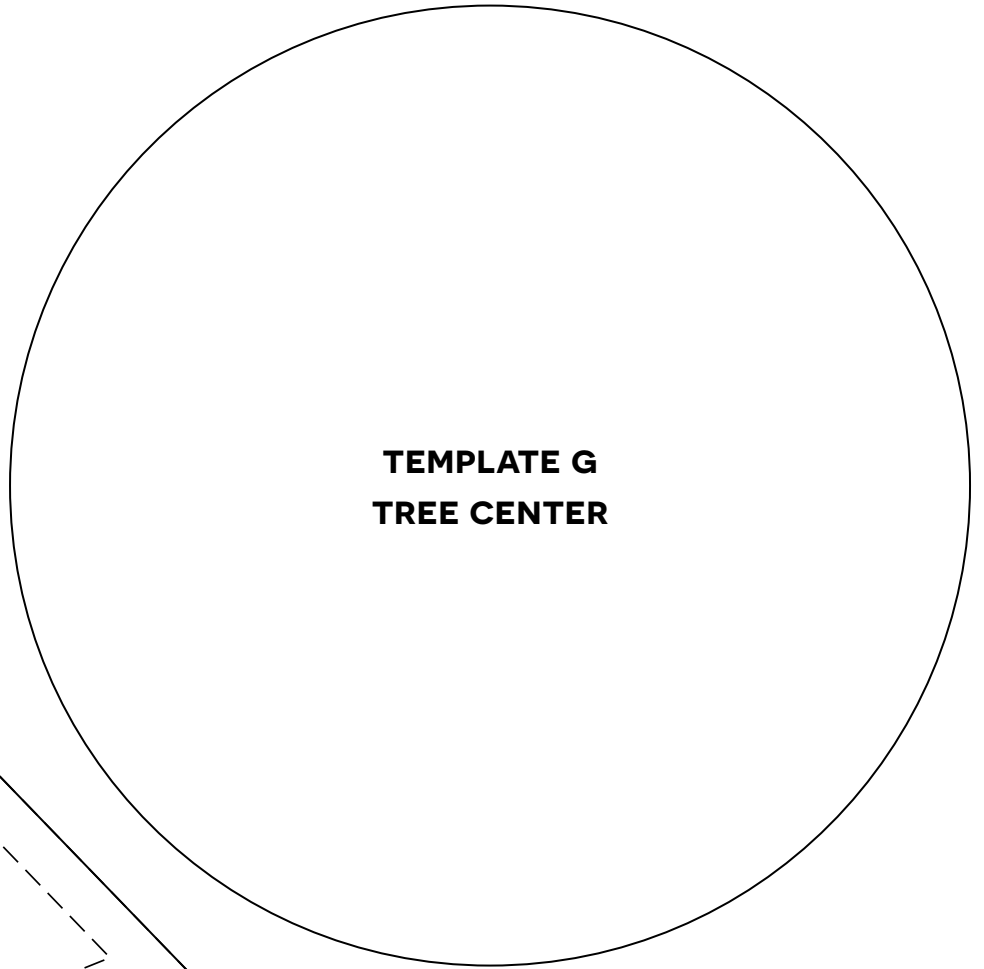
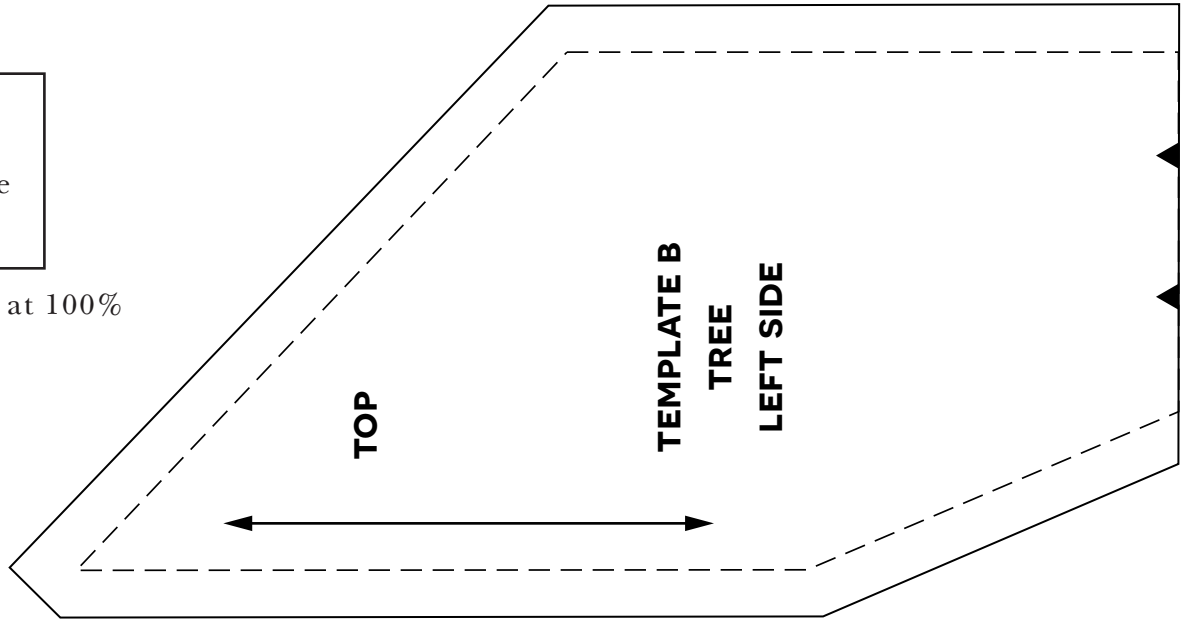
Print template at 100%



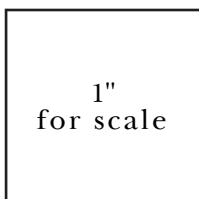
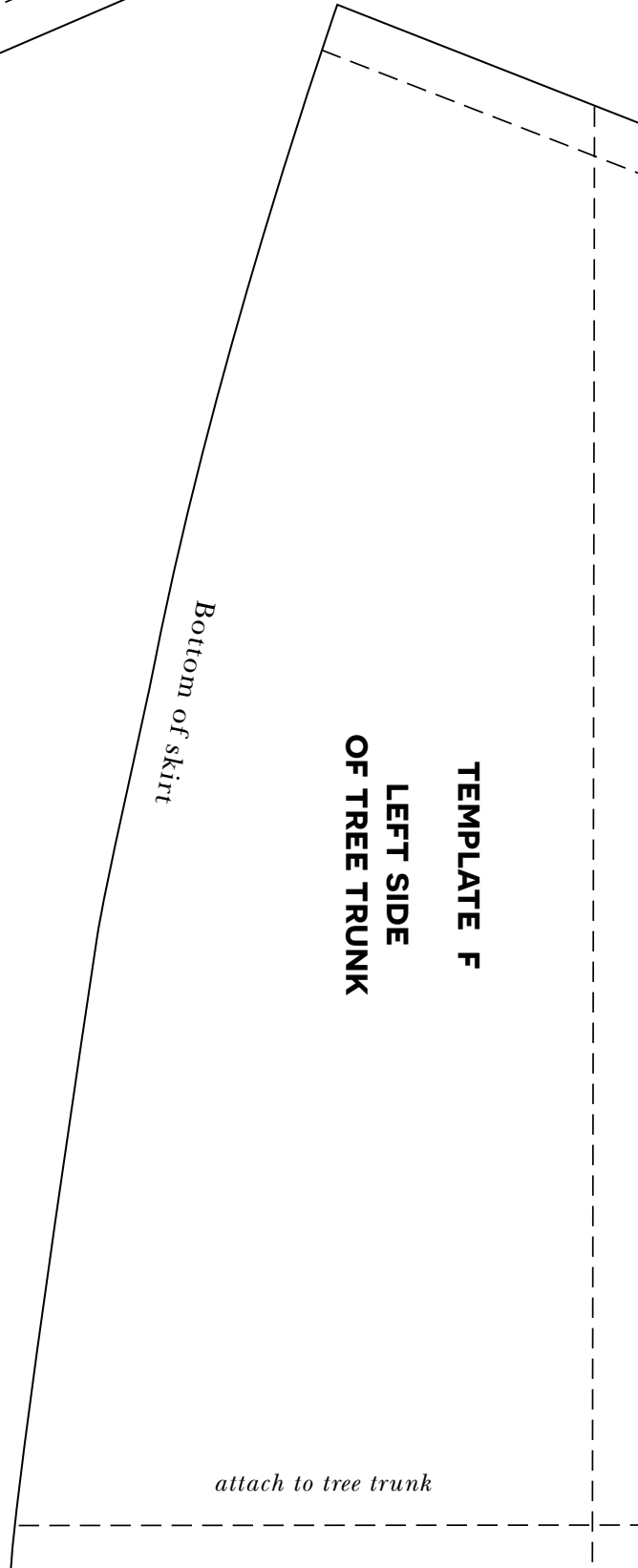
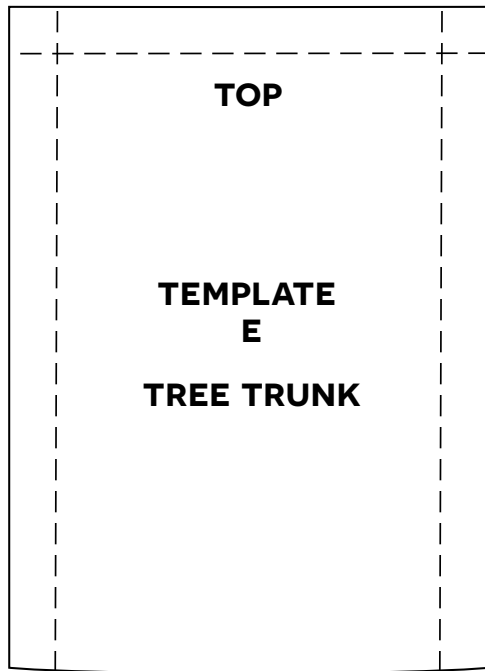
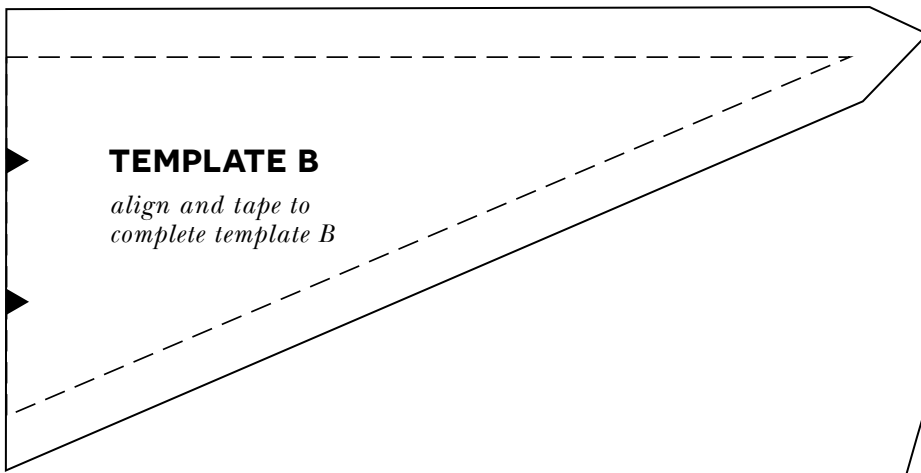
TEMPLATES



Print template at 100%



TEMPLATES



Print template at 100%