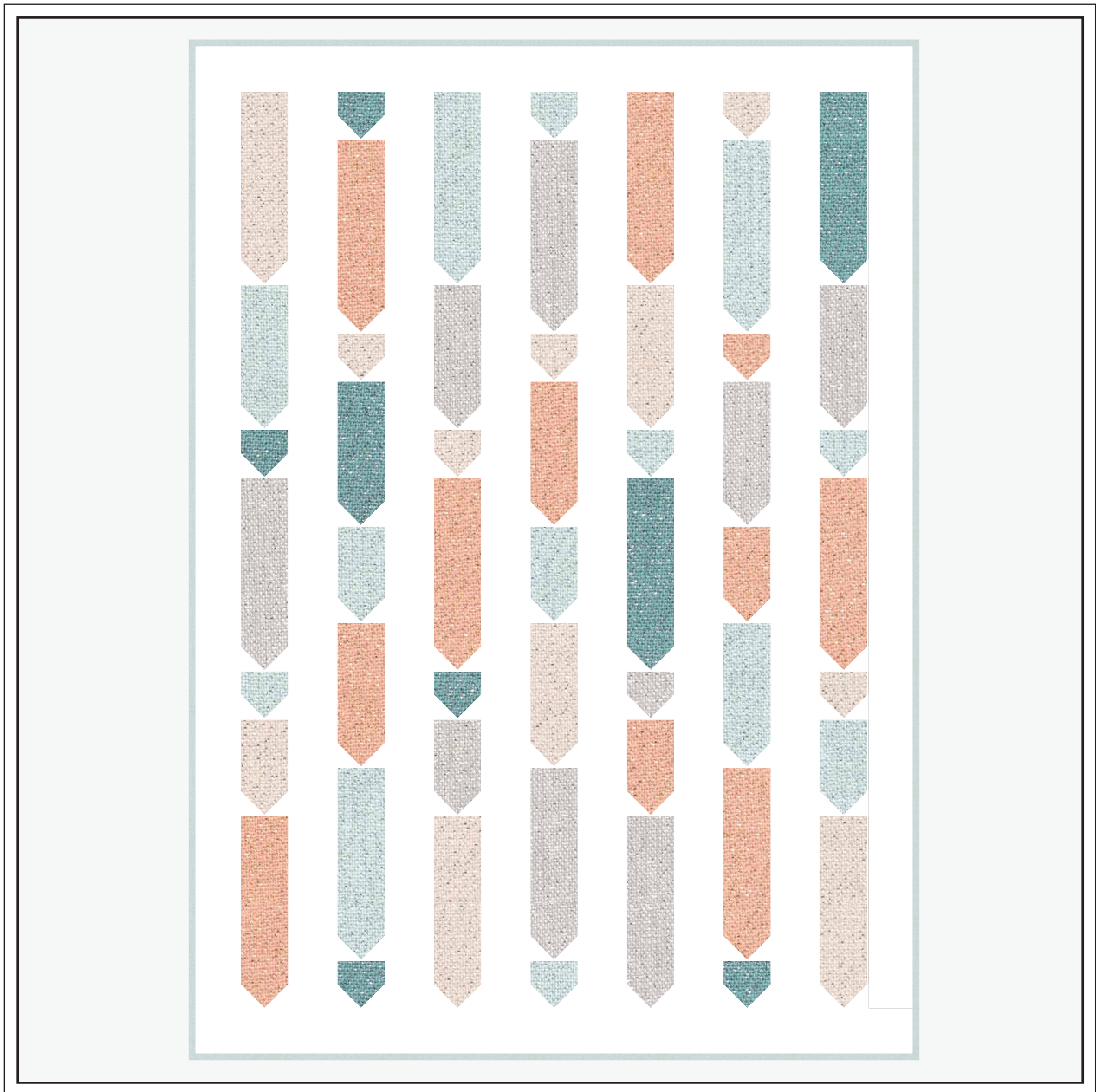




CLOUD9 FABRICS

FREE PROJECT SHEET **SPARKLE IN THE RAIN QUILT** SIZE 45" x 63"



DESIGN **MICHELLE ENGEL BENCSKO**

TECHNICAL EDITOR **LINDA SPIRIDON**

CREDITS & INFO

SPARKLE IN THE RAIN QUILT

SIZE: 45" x 63"

DESIGNER: Michelle Engel Benckso

TECHNICAL EDITOR: Linda Spiridon

GLIMMER SOLIDS

DESIGNER: Cloud9 Fabrics

SUBSTRATE: Yarn-Dye Broadcloth

DELIVERY DATE: July 2017

SUPPLIES & NOTES

Rotary cutter & mat

Tape measure & ruler

Sewing machine & coordinating thread

Straight pins

Wash, dry and press fabrics before beginning.

¼" seam allowance unless otherwise noted.

WOF = Width of fabric selvedge to selvedge.

Press seams as you go.

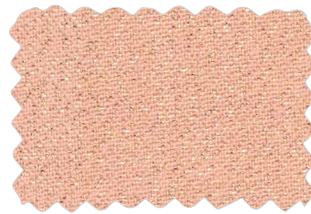
MATERIALS NEEDED



FABRIC A **900**
limestone
2 yards



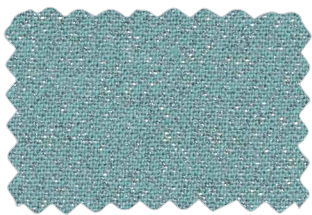
FABRIC B **9000**
pearl
⅓ yard



FABRIC C **9005**
rose gold
⅓ yard



FABRIC D **9001**
ice
⅓ yard



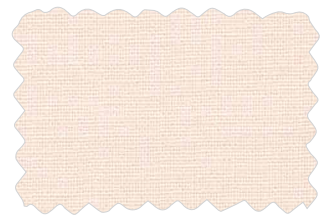
FABRIC E **9007**
mineral
⅜ yard



FABRIC F **9002**
silver
⅜ yard



FABRIC G **9001**
ice
½ yard (Binding)



BACKING **971**
blush
4 yards

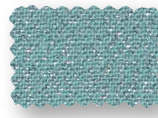
CUTTING DIRECTIONS

Note: This is directional fabric & strips should be cut vertical



14- 3½" x WOF strips
104- 2" squares

FABRIC A



2- 3½"w x 12½"h strips
1- 3½"w x 9½"h strips
5- 3½" squares

FABRIC E



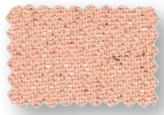
3- 3½" x 12½" strips
2- 3½" x 9½" strips
1- 3½" x 6½" strips
5- 3½" squares

FABRIC B



4- 3½"w x 12½"h strips
3- 3½"w x 9½"h strips
1- 3½"w x 6½"h strips
1- 3½" squares

FABRIC F



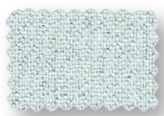
6- 3½" x 12½" strips
2- 3½" x 9½" strips
2- 3½" x 6½" strips
1- 3½" squares

FABRIC C



5- 2.5" strips
(for Binding)

FABRIC G



3- 3½" x 12½" strips
2- 3½" x 9½" strips
3- 3½" x 6½" strips
5- 3½" squares

FABRIC D

ASSEMBLY DIRECTIONS

1. Draw a diagonal line from corner to corner on wrong side of all Fabric **A** 2" squares. [fig. 1]
2. At the bottom end of all printed fabric strips and squares, lay a Fabric **A** 2" square RST (right sides together) on bottom left side with diagonal line pointed to the center. Sew on the line. Trim seam allowance to ¼". Press. [fig 2]
3. Repeat Step 2 with a second Fabric **A** 2" square, placed on the right side of the strip with diagonal line pointing to the center. Sew on the line, trim seam allowance, and press. [fig 3]
4. Refer to the **QUILT DIAGRAM**, arrange units in vertical rows. Sew units end to end to complete each row. Make 7 vertical rows.
5. Sew 3½" Fabric **A** strips together to equal vertical length of pieced strips. (approx. 57½") Make 8.
6. Referring to **QUILT DIAGRAM**, layout Fabric **A** strips in between pieced unit rows. Sew strips to pieced rows to complete quilt top.
7. Add top and bottom Fabric **A** 3½" strips x width of quilt. (approx. 45½")
8. Layer backing, batting, and quilt top. Bind and quilt.

DIAGRAMS

fig 1

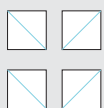


fig 2

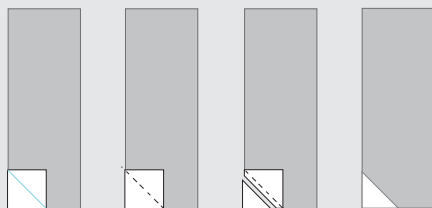
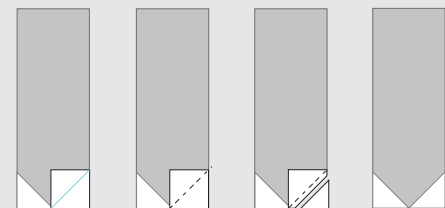


fig 3



QUILT DIAGRAM

