

TO THE POINT QUILT PROJECT

Beginner friendly!

Featuring **FABLED LAND** | *Pip & Lo*



CLOUD9
FABRICS

organic cotton. happy you. happy earth.

© CLOUD9 FABRICS 2023 | ALL RIGHTS RESERVED | CLOUD9FABRICS.COM | FOR PERSONAL USE ONLY

INFO & MATERIALS

TO THE POINT QUILT PROJECT

SIZE: 44" x 60"

DESIGNER: Michelle Engel

TECHNICAL EDITOR: Linda Spiridon

Note: All possible care has been taken to assure the accuracy of this pattern. We are not responsible for printing errors or the manner in which individual work varies. Please read instructions carefully before starting the construction of this quilt. If desired, wash and iron your fabrics before starting to cut.

This project uses 8 different fabrics

See chart below for fabric quantities

1 3/4 yd background fabric

1/2 yd binding

3 7/8 yards backing

QUILT FACE MATERIALS

Cutting dimensions include 1/4" seam allowances.

2/3 yds each of 8 different printed fabrics (see chart below)

7-6 3/4" x 9 3/4" rectangles in each fabric

1 3/4 yds of background fabric

28- 6 3/4" x 9 3/4" rectangles

227489



FABRIC A

227492



FABRIC B

227488



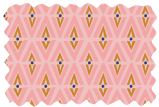
FABRIC C

227487



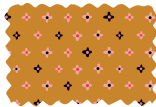
FABRIC D

227490



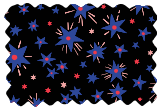
FABRIC E

227493



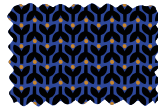
FABRIC F

227491



FABRIC G

227494



FABRIC H

Use a solid fabric that is the same color on both sides and has no pattern



BACKGROUND FABRIC

DIAGRAMS

fig 1

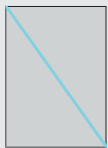


fig 2



fig 3

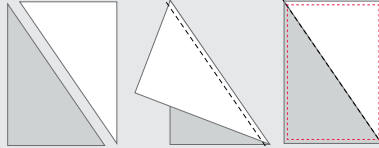
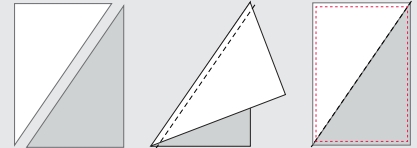


fig 4



fig 5



CUTTING DIRECTIONS

FABRICS A, B, C & D: cut each of the fabrics on the diagonal from upper left to lower right [fig 1]
You will only use the LOWER LEFT triangles in the quilt. Set upper right triangles aside.

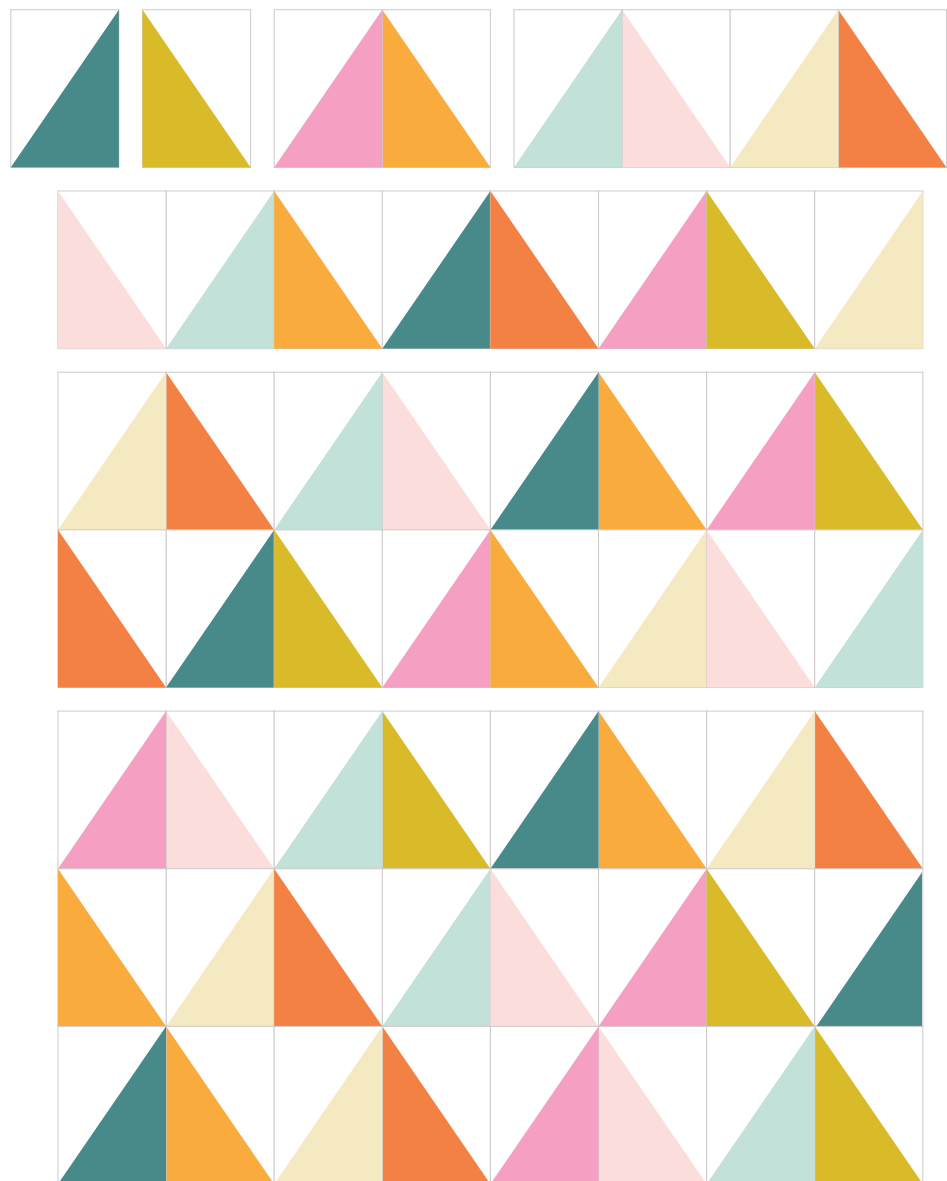
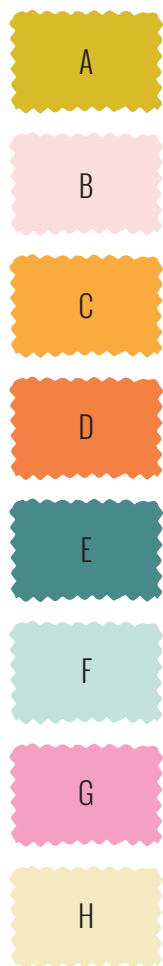
FABRICS E, F, G & H: cut each of the fabrics on the diagonal from upper right to lower left [fig 2]
You will only use the LOWER RIGHT triangles in the quilt. Set upper left triangles aside.

BACKGROUND: Cut rectangles on the diagonal from upper right to lower left corner. [fig 2]

Set aside all triangles to use as upper right corner triangle to use with FABRICS A, B, C & D

Set aside all triangles to use as upper left corner triangle to use with FABRICS E, F, G & H

QUILT LAYOUT DIAGRAM



ASSEMBLY DIRECTIONS

1. Sew all background triangles to FABRICS A, B, C & D. All prints will be in the LOWER LEFT corner and background will be in upper right. Lay pieces flat RS up. Flip background fabric on top of print (*right side up*), matching edges. Sew with 1/4" seam allowance. [fig3] This is a bias edge, do not pull or stretch. Press seams to the print.
2. Sew all background triangles to FABRICS E, F, G & H. All prints will be in the LOWER RIGHT corner and background will be in upper left. Lay pieces flat RS up. Flip background fabric on top of print (*right side up*), matching edges. Sew 1/4" seam. [fig3] This is a bias edge, do not pull or stretch. Press seams to the print.
3. Square up all triangles to measure 6" x 9" making sure the diagonal line meets exactly in the corner. [fig 3 & fig 5] It is important to have the diagonal line aligned on the ruler.
4. Layout pieced rectangles in rows referring to the QUILT LAYOUT DIAGRAM for placement.
5. Sew rectangles into rows. Sew 7 horizontal rows together, pressing seams as you go.
6. Layer the backing, batting and quilt top. Baste, quilt and bind.