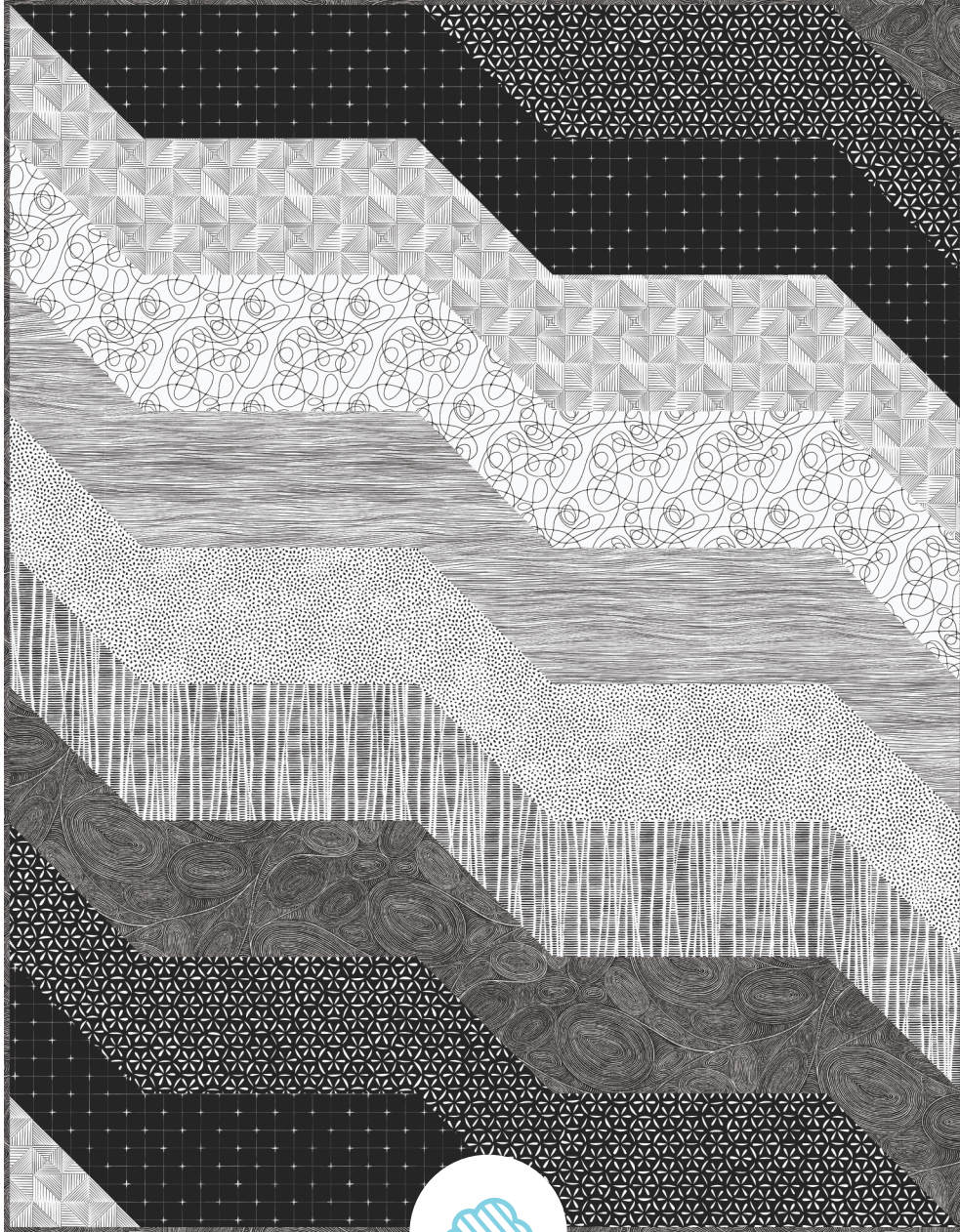


DOWNSTREAM QUILT PROJECT

Beginner friendly!

Featuring **MARKS MADE** | *Leanne Friedberg*



CLOUD9
FABRICS

organic cotton. happy you. happy earth.

© CLOUD9 FABRICS 2026 | ALL RIGHTS RESERVED | CLOUD9FABRICS.COM | FOR PERSONAL USE ONLY

DOWNSTREAM QUILT

SIZE: 46" x 58"

DESIGNER: Michelle Engel

TECHNICAL EDITOR: Linda Spiridon

This project uses 8 different fabrics

See chart below for fabric quantities

½ yd binding

3½ yd backing

Note: All possible care has been taken to assure the accuracy of this pattern. We are not responsible for printing errors or the manner in which individual work varies. Please read instructions carefully before starting the construction of this quilt. If desired, wash and iron your fabrics before starting to cut.

QUILT FACE MATERIALS

Cutting dimensions include ¼" seam allowances.



FABRIC A

228853
½ yd needed
2- 7" x 13½" rectangles
4- 7½" x 7½" squares



FABRIC E

228848
½ yd needed
2- 7" x 13½" rectangles
3- 7½" x 7½" squares



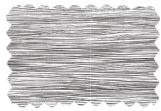
FABRIC B

228849
½ yd needed
2- 7" x 13½" rectangles
3- 7½" x 7½" squares



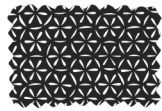
FABRIC F

228852
½ yd needed
2- 7" x 13½" rectangles
4- 7½" x 7½" squares



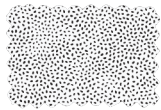
FABRIC C

228857
½ yd needed
2- 7" x 13½" rectangles
3- 7½" x 7½" squares



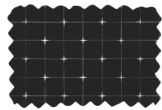
FABRIC G

228854
½ yd needed
3- 7" x 13½" rectangles
4- 7½" x 7½" squares



FABRIC D

228855
½ yd needed
2- 7" x 13½" rectangles
3- 7½" x 7½" squares



FABRIC H

228858
½ yd needed
3- 7" x 13½" rectangles
4- 7½" x 7½" squares

DIAGRAMS

fig 1

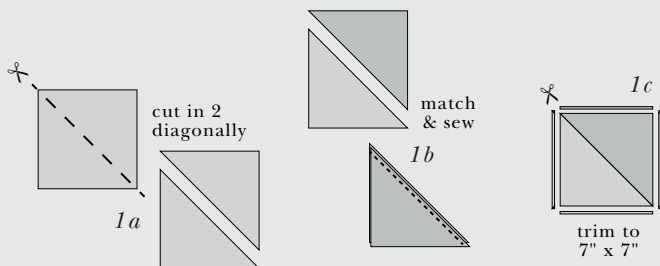
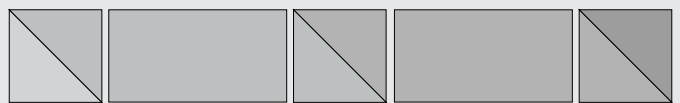


fig 2 row assembly



ASSEMBLY DIRECTIONS

1. Cut pieces using chart on page 2
2. Cut each square in half diagonally, upper left corner to lower right corner corner [fig 1a]
3. Match triangle colors to their mate [fig 1b] according to QUILT LAYOUT DIAGRAM.
Pay attention to direction of fabrics as you go. Use ¼" seam allowance. Press seam.
4. Trim new squares to 7" x 7" [fig 1c]
5. Referring to QUILT LAYOUT DIAGRAM layout out the pieces and then begin to assemble the rows [fig 2].
6. Sew rows together as shown, pressing seams as you go.
7. Layer the backing, batting and quilt top. Baste, quilt and bind.

QUILT LAYOUT DIAGRAM

