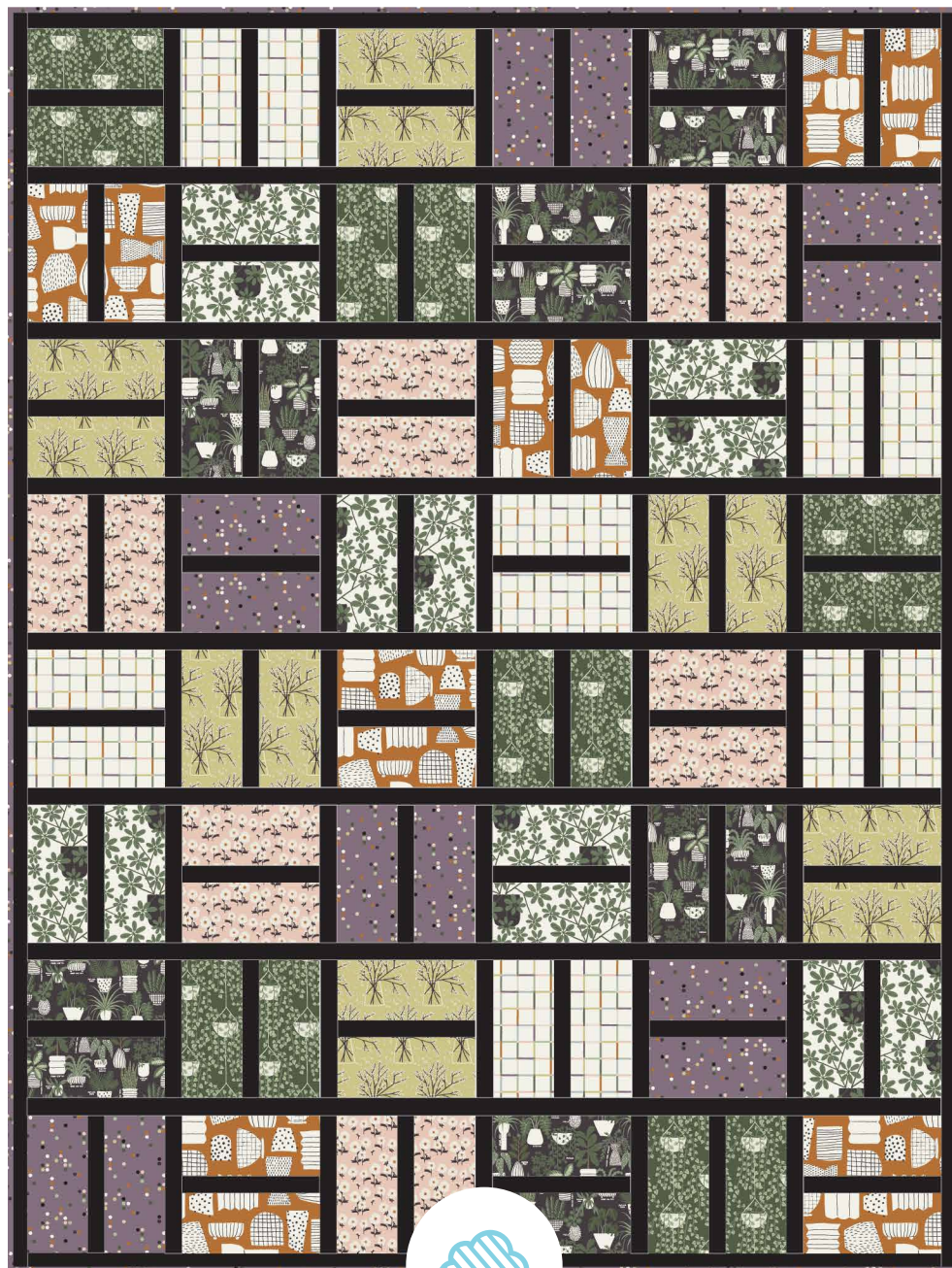


PATIO BLOCKS QUILT PROJECT

Beginner friendly!

Featuring **PLANTED** | *Betsy Siber*



CLOUD9
FABRICS

organic cotton. happy you. happy earth.

© CLOUD9 FABRICS 2023 | ALL RIGHTS RESERVED | CLOUD9FABRICS.COM | FOR PERSONAL USE ONLY

PATIO BLOCKS QUILT PROJECT

SIZE: 50½" x 66½"

DESIGNER: Michelle Engel

TECHNICAL EDITOR: Linda Spiridon

Note: All possible care has been taken to assure the accuracy of this pattern. We are not responsible for printing errors or the manner in which individual work varies. Please read instructions carefully before starting the construction of this quilt. If desired, wash and iron your fabrics before starting to cut.

This project uses 8 different fabrics
See chart below for fabric quantities
1 ¾ yd background fabric
½ yd binding
4 1/8 yards backing

QUILT FACE MATERIALS

*Cutting dimensions include ¼" seam allowances.
WOF = Width of fabric selvedge to selvedge. Press seams as you go.*

½ yard each of 8 different printed fabrics (see chart below)
12- 3½" x 7½" rectangles from each ½ yd (96 total)

From background fabric:

Cut (27) 1½" x WOF subcut
- (88) 1½" x 7½" strips
- Make (7) 1½" x 47½" strips.

Cut (6) 2" x WOF for quilt borders subcut
- (2) 2" x 50½" (top & bottom borders)
- (2) 2" x 63½" (side borders)

Use a solid fabric that is the same color on both sides and has no pattern



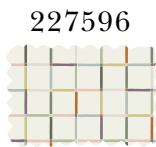
BACKGROUND FABRIC



FABRIC A



FABRIC B



FABRIC C



FABRIC D



FABRIC E



FABRIC F



FABRIC G

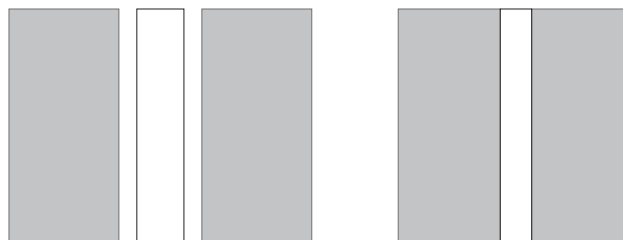


FABRIC H

BLOCK ASSEMBLY

1. Sew a 1½" x 7½" strip between two matching rectangles. This creates a 7½" square. (fig 1)

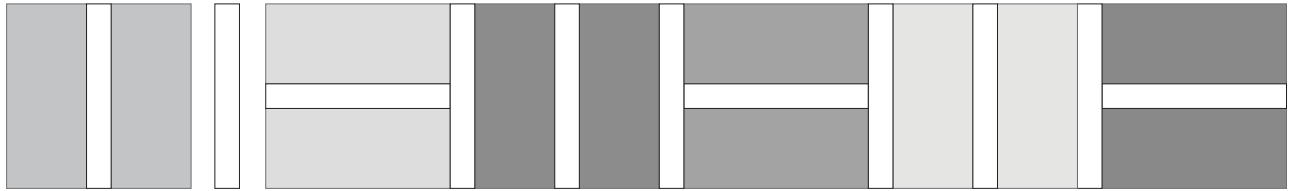
fig 1



2. Repeat step 1 with all matching rectangles. (total 48 blocks)

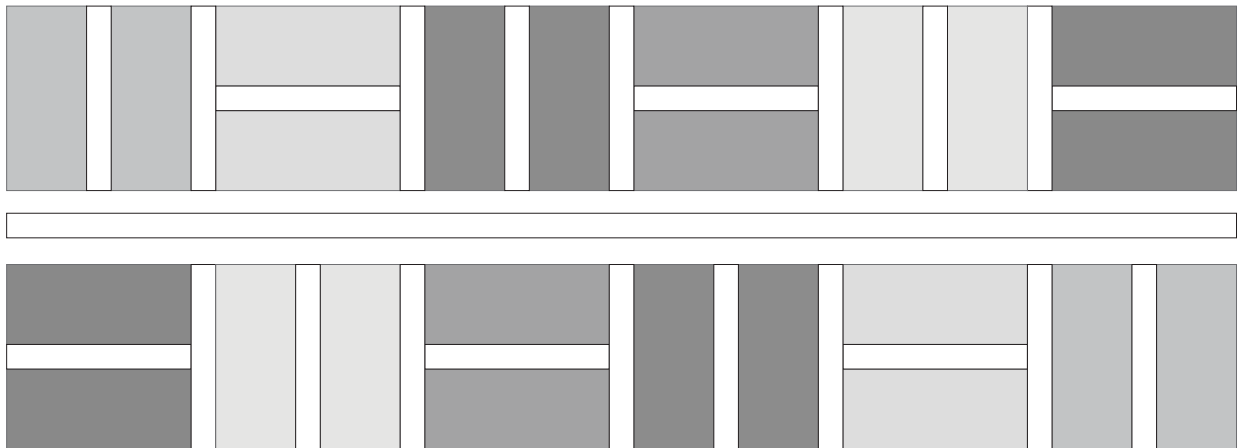
3. Refer to assembly diagram and arrange 6 blocks to make a horizontal row alternating the direction of the blocks (*fig 2*). Add a $1\frac{1}{2}$ " x $7\frac{1}{2}$ " strip between each block to complete the row. Make 8 rows referring to assembly diagram for placement.

fig 2



4. Sew $1\frac{1}{2}$ " sashing strips end to end to equal the width of the quilt top (*approx. 47 $\frac{1}{2}$ "*). Make 7.
5. Sew a sashing strip between horizontal rows to connect all rows and complete quilt top (*fig 3*).

fig 3



6. Sew 2" border strips end to end to equal the vertical length of the quilt top (*approx. 63 $\frac{1}{2}$ "*). Make 2. Sew to the sides of the quilt top.
7. Sew 2" border strips end to end to equal the horizontal width of the quilt top (*approx. 50 $\frac{1}{2}$ "*). Make 2. Sew to the top and bottom of the quilt top.
8. Layer the backing, batting and quilt top
9. Baste, quilt, bind

QUILT LAYOUT DIAGRAM

