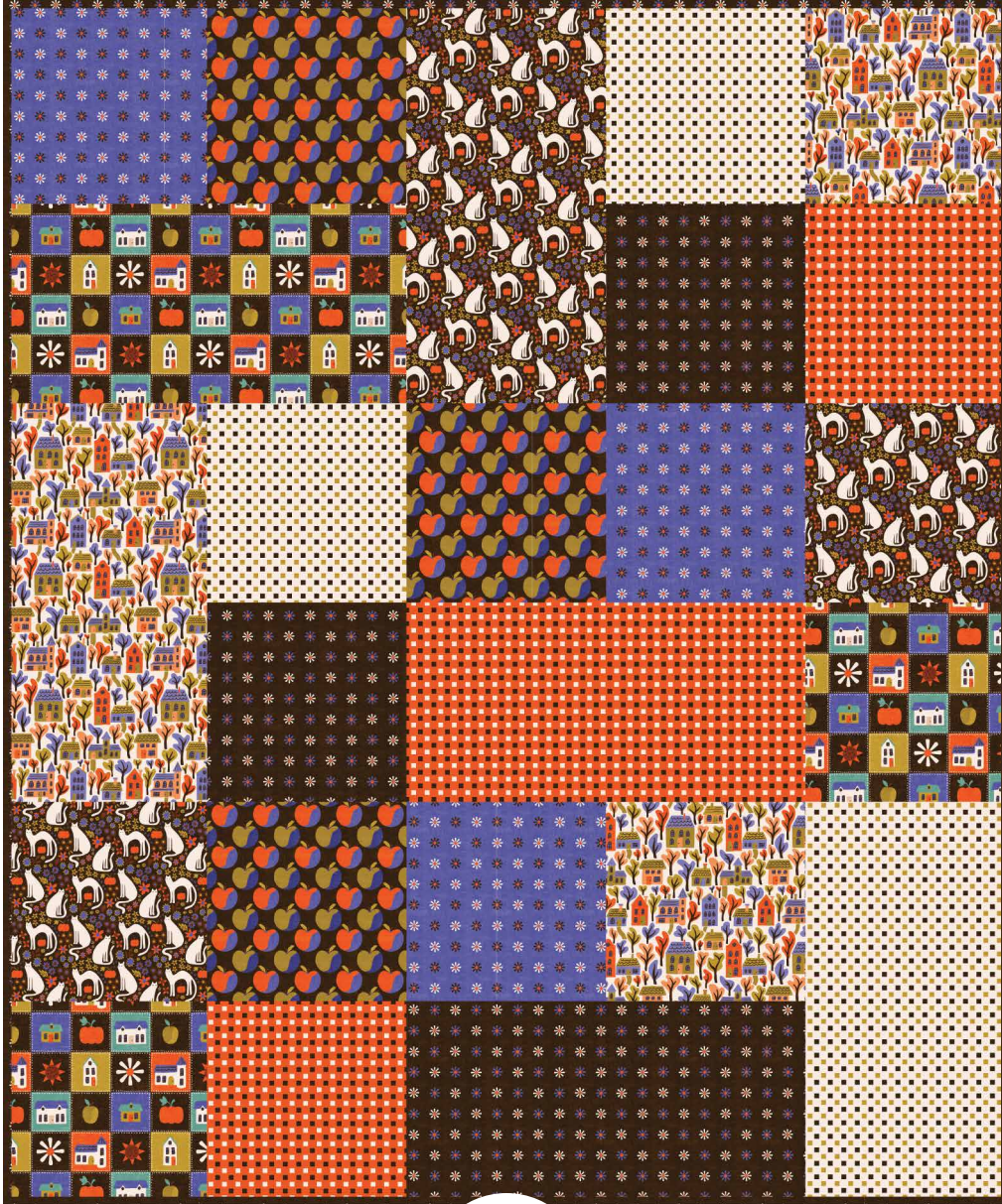


# EASY PEASY QUILT PROJECT

*Beginner friendly!*

Featuring **SLEEPY HOLLOW** | *Amy MacCready*



**CLOUD9**  
FABRICS

organic cotton. happy you. happy earth.

© CLOUD9 FABRICS 2023 | ALL RIGHTS RESERVED | CLOUD9FABRICS.COM | FOR PERSONAL USE ONLY

## INFO & MATERIALS

### EASY PEASY QUILT

SIZE: 45½" x 54½"

DESIGNER: Jackie Reeve

TECHNICAL EDITOR: Linda Spiridon

This project uses 8 different fabrics

See chart below for fabric quantities

½ yd binding

¾ yd backing

*Note: All possible care has been taken to assure the accuracy of this pattern. We are not responsible for printing errors or the manner in which individual work varies. Please read instructions carefully before starting the construction of this quilt. If desired, wash and iron your fabrics before starting to cut.*

## QUILT FACE MATERIALS

*Cutting dimensions include ¼" seam allowances.*

*WOF = Width of fabric selvedge to selvedge. Press seams as you go.*

½ yd each of 8 different printed fabrics (see chart below)

From FABRIC A, B, C,  
D, E, and H:

Cut 2- 9 ½" squares and  
1- 18 ½" x 9 ½" rectangles

From FABRIC G and F:

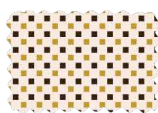
Cut 3- 9 ½" squares

228153



FABRIC A

228156



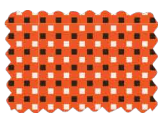
FABRIC B

228160



FABRIC C

228157



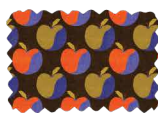
FABRIC D

228166



FABRIC E

228164



FABRIC F

228159



FABRIC G

228155



FABRIC H

## BLOCK ASSEMBLY

1. Sew together pairs of the 9 ½" squares following the QUILT LAYOUT DIAGRAM. Make 9 (fig 1)
2. Follow the QUILT LAYOUT DIAGRAM, sew one pair of squares from step 1 to one 18 ½" x 9 ½" rectangle. Make 5 (fig 2)
3. Rotate blocks according to the QUILT LAYOUT DIAGRAM. Sew two blocks together to create a row. Use remaining blocks to complete rows. Sew three rows together.
4. Layer quilt top, backing and batting. Quilt as desired and bind.

## DIAGRAMS

fig 1

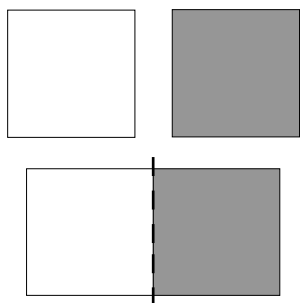
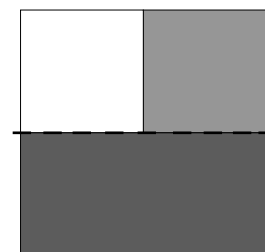
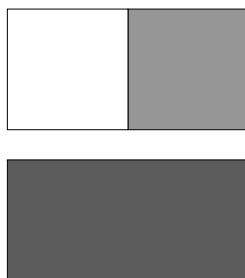


fig 2



# QUILT LAYOUT DIAGRAM



A



B



C



D



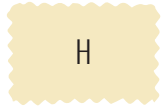
E



F



G



H

