

TWILL QUILT PROJECT

Beginner friendly!

Featuring **POPPY FIELDS** | *MK Surface*



CLOUD9
FABRICS

organic cotton. happy you. happy earth.

© CLOUD9 FABRICS 2023 | ALL RIGHTS RESERVED | CLOUD9FABRICS.COM | FOR PERSONAL USE ONLY

INFO & MATERIALS

TWILL QUILT PROJECT

SIZE: 42½" x 58½"

DESIGNER: Michelle Engel

TECHNICAL EDITOR: Linda Spiridon

This project uses 8 different fabrics for the quilt topper.

Different backing and binding optional.

See chart below for fabric quantities

1¾ yd background fabric

½ yd binding, 3¾ yd backing

Note: All possible care has been taken to assure the accuracy of this pattern. We are not responsible for printing errors or the manner in which individual work varies. Please read instructions carefully before starting the construction of this quilt. If desired, wash and iron your fabrics before starting to cut.

QUILT FACE MATERIALS

Cutting dimensions include ¼" seam allowances.

WOF = Width of fabric selvedge to selvedge. Press seams as you go.

½ yard each of 8 different printed fabrics (see chart below)
6- 6½" squares from each fabric (48 total)

From background fabric cut:

8- 6½" x WOF strips

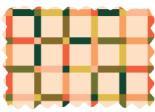
Subcut into 48- 6½" squares

227739



FABRIC A

227342



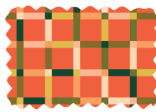
FABRIC B

227746



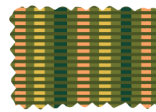
FABRIC C

227741



FABRIC D

227747



FABRIC D

227740



FABRIC E

227745



FABRIC F

227744



FABRIC G

227748



FABRIC H

227743



FABRIC H

Use a solid fabric that is the same color on both sides and has no pattern



BACKGROUND FABRIC

BLOCK ASSEMBLY

1. Draw a diagonal line on the wrong side of all 6½" background squares (*fig 1*)
2. To make HST select a 6½" print fabric square and a 6½" background square, lay right sides together and sew ¼" on each side of diagonal line (*fig 2*)
3. Cut on diagonal line. (*fig 3*) Press seams toward printed fabric.
4. Square up blocks to 5¾". Use diagonal 45° line on the ruler to help center the block. You will use 11 HST's of each print following the quilt diagram layout. Total 88 HST's.

fig 1

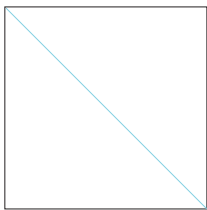


fig 2

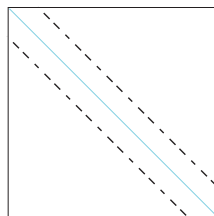
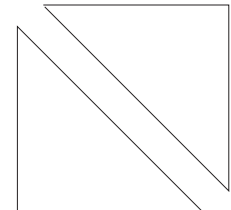
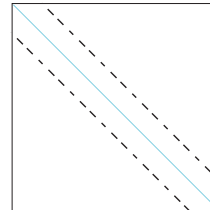
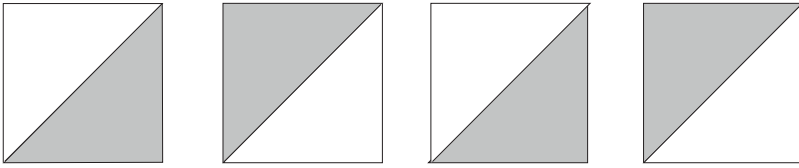


fig 3



5. Refer to the assembly diagram for HST placement (*or arrange however you like*)
6. Sew 8 HST's together in a row noting to reverse HST's in each row to achieve a diagonal effect. (*fig 4*) Make 11 rows.

fig 4



7. Sew rows together to complete quilt top
8. Layer backing, batting, and quilt top
9. Baste, quilt and bind

QUILT LAYOUT DIAGRAM

