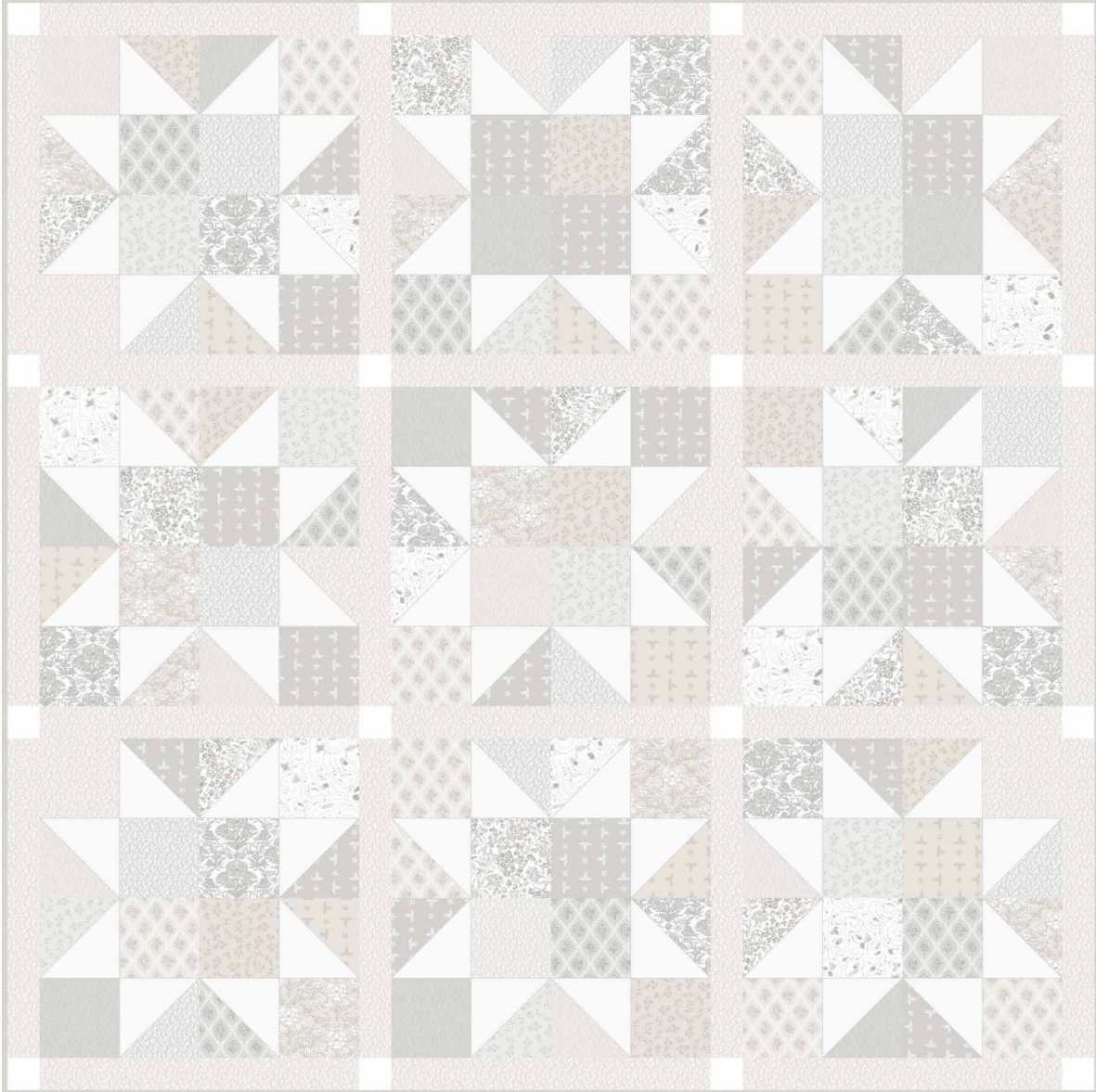


VINTAGE STARS QUILT PROJECT

Beginner friendly!

Featuring **GENTLE WHISPERS** | *Trisha Patel*



CLOUD9
FABRICS

organic cotton. happy you. happy earth.

© CLOUD9 FABRICS 2023 | ALL RIGHTS RESERVED | CLOUD9FABRICS.COM | FOR PERSONAL USE ONLY

INFO & MATERIALS

VINTAGE STARS QUILT

SIZE: 62½" x 62½"

DESIGNER: Amy Lollis

TECHNICAL EDITOR: Linda Spiridon

This project uses 4 packs of 5" squares

See chart below for fabric quantities

1 ½ yd background fabric

1 yd sashing fabric

½ yd binding

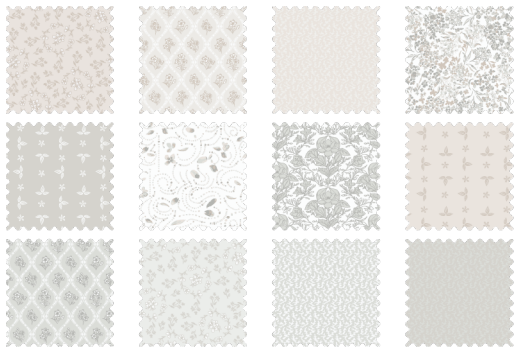
4 yd backing

Note: All possible care has been taken to assure the accuracy of this pattern. We are not responsible for printing errors or the manner in which individual work varies. Please read instructions carefully before starting the construction of this quilt. If desired, wash and iron your fabrics before starting to cut.

QUILT FACE MATERIALS

Cutting dimensions include ¼" seam allowances.

4 - packs of 5" squares for a total of 144 squares



1 ½ yd background fabric

72- 5" squares
16 - 2½" squares

BACKGROUND
FABRIC



1 yd sashing fabric

24 - 2½" x 18½"
strips

SASHING
FABRIC



DIAGRAMS

fig 1



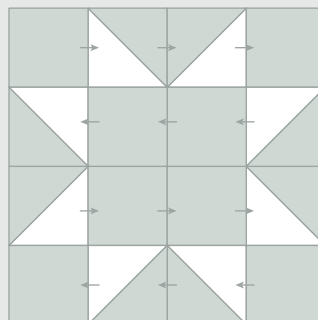
fig 2



fig 3



fig 4



ASSEMBLY DIRECTIONS

1. Place background square and print square together with Right Sides Together (RST). Mark a diagonal line [fig1]. Sew on the marked line. Trim $\frac{1}{4}$ " seam allowance [fig2] and press the seam to one side. Trim HSTs to 5" [fig3]. Make 72 HSTs.
2. Sew HSTs and squares into rows following the diagram in [fig4], pressing seams in opposite directions. Sew rows together into squares. Press seams open.
3. Layout pieced squares, sashing strips, and sashing squares in rows referring to the QUILT LAYOUT DIAGRAM for placement. Sew squares into rows. Sew horizontal rows together, pressing seams as you go.
4. Layer the backing, batting and quilt top. Baste, quilt and bind.

QUILT LAYOUT DIAGRAM

